

Electric Stacker, Walking Operation DB12/15-WA1



Safe & Efficient

- It remain braking state when the handle is in vertical and horizontal direction to improve the safety of the vehicle.
- Automatic deceleration function, stepless speed change device, operating safer.
- Built-in unloading valve to protect the car do not overload use, improve the reliability.
- Emergencyswitch, tortoise speed slow down switch, hand equipped with an emergency direction switch, the operation be more safety.

Advanced design

- Low center of gravity ensures the stable operation.
- The electronic components' concentrated design simplifies the circuit and makes easily assemble, debuging and maintaining.
- CANbus technology simplifies circuit and increases reliability.
- Hall sensor reduces abrasion to increase of service life.
- Vertical driving wheel ensures convenient maintenance and small turning radius. Water proof and dust-proof motor structure, keeps the braking and motor more durable and reliable.

Flexible control

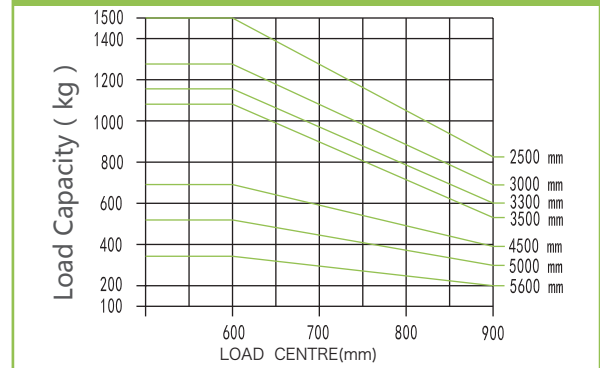
- The mast and the frame are dividable and exchangeable.
- Full free lifting is suitable for low roof house (3M lift height truck can enter into a 2M door)

- Side way battery is easy to maintain.
- Multi-function has electric qty, fault code display, working hour display and speed display

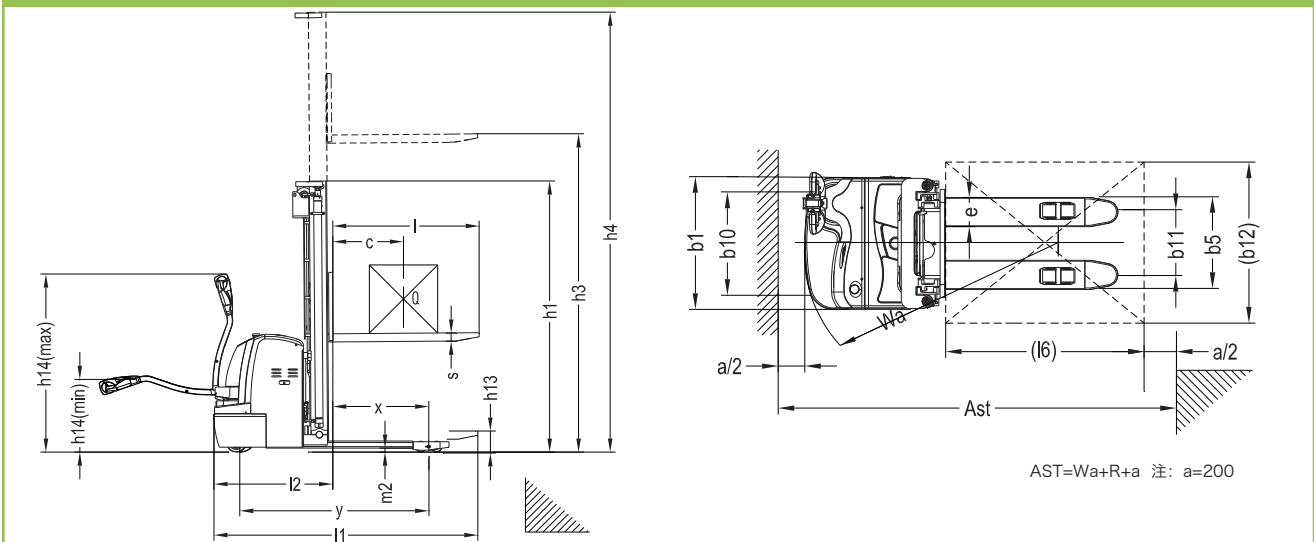
Practical & convenient

- Damping cushion for low-noise operation.
- AC Motor eliminates replacement of carbon brush.
- Low voltage protection setting prolongs the service life of battery.
- Side way battery is easy to maintain.

CAPACITY CHART



MACHINE 2D GRAPH



IDENTIFICATION		DB12-WA1	DB15-WA1	DB15-WA1 (Standard)
Drive	-	Electric(storage battery)	Electric(storage battery)	Electric(storage battery)
Operator type	-	pedestrian	pedestrian	pedestrian
Load Capacity/rated load	Q(kg)	1200	1500	1500
Load centre distance	c(mm)	500	600	600
Load distance	x(mm)	697	697	697
Wheelbase	Y(mm)	1335	1410	1383
WEIGHT				
Service weight (including battery)	kg	660/710/740/760	780/830/840/850	1270/1290/1310
Axle loading, laden, front/rear	kg	1060/870	1280/1070	1440/1280
Axle loading, unladen, front/rear	kg	560/170	650/200	870/350
WHEEL CHASSIS				
Tyres Type	-	polyurethane	polyurethane	polyurethane
Wheel size, front	-	φ 250×70	φ 250×70	φ 250×70
Wheel size, rear	-	φ 80×70	φ 80×70	φ 80×84
Additional wheels	-	φ 150×60	φ 150×60	φ 150×60
Wheels, number front/rear (x=driven wheels)	-	1x+1/4	1x+1/4	1x+1/4
Track width, front	b10(mm)	520	520	520
Track width, rear	b11(mm)	410/525	410/525	405/530
DIMENSIONS				
Closed mast height	h1(mm)	2087/1837/2087/2237	2087/1837/2087/2237	2050/2210/2410
Lift height	h3(mm)	1600/2500/3000/3300	1600/2500/3000/3300	4500/5000/5600
Height, mast extended	h4(mm)	2087/3087/3587/3887	2087/3087/3587/3887	5070/5560/6150
Height of tiller, in drive position, Min. /Max.	h14(mm)	670/1300	670/1300	670/1300
Height, fork lowered	h13(mm)	90	90	90
Overall length	l1(mm)	1965	2045	1950
Length to face of forks	l2(mm)	792	878	878
Overall width	b1(mm)	820	820	820
Fork dimensions	s/e/l(mm)	60/170/1070(1150)	60/170/1070(1150)	60/180/1070(1150)
Width across forks	b5(mm)	580/695	580/695	570/695
Ground clearance ,Centre of wheelbase	m2(mm)	28	28	31
Aisle width for pallets 1000x1200 crossways	Ast(mm)	2400	2480	2450
Aisle width for pallets 800x1200 lengthways	Ast(mm)	2370	2450	2420
Turning radius	Wa(mm)	1525	1605	1575
PERFORMANCE				
Travel speed, laden/unladen	Km/h	5.3/5.6	5.8/6	5.8/6
Lift speed, laden/unladen	m/s	0.06/0.13	0.06/0.13	0.11/0.15
Lowering speed, laden/ unladen	m/s	0.13/0.10	0.13/0.10	0.12/0.12
Max. gradeability, laden/unladen	%	6/15	6/15	8/15
Service brake	-	Electromagnetic brake	Electromagnetic brake	Electromagnetic brake
MOTOR				
Drive motor power	kW	0.8	1.2	1.2
Lift motor power	kW	2.2	2.2	3
Battery voltage/rated capacity	V/Ah	24/120	24/200	24/240(300)
Battery weight	kg	90	160	220(260)
OTHERS				
Type of dirve control	-	DC	AC	AC
Sound level at the driver' sear according to DN12053	dB(A)	70	70	70

The company reserves the right to modify the provision of parameters, such as a change without notice.